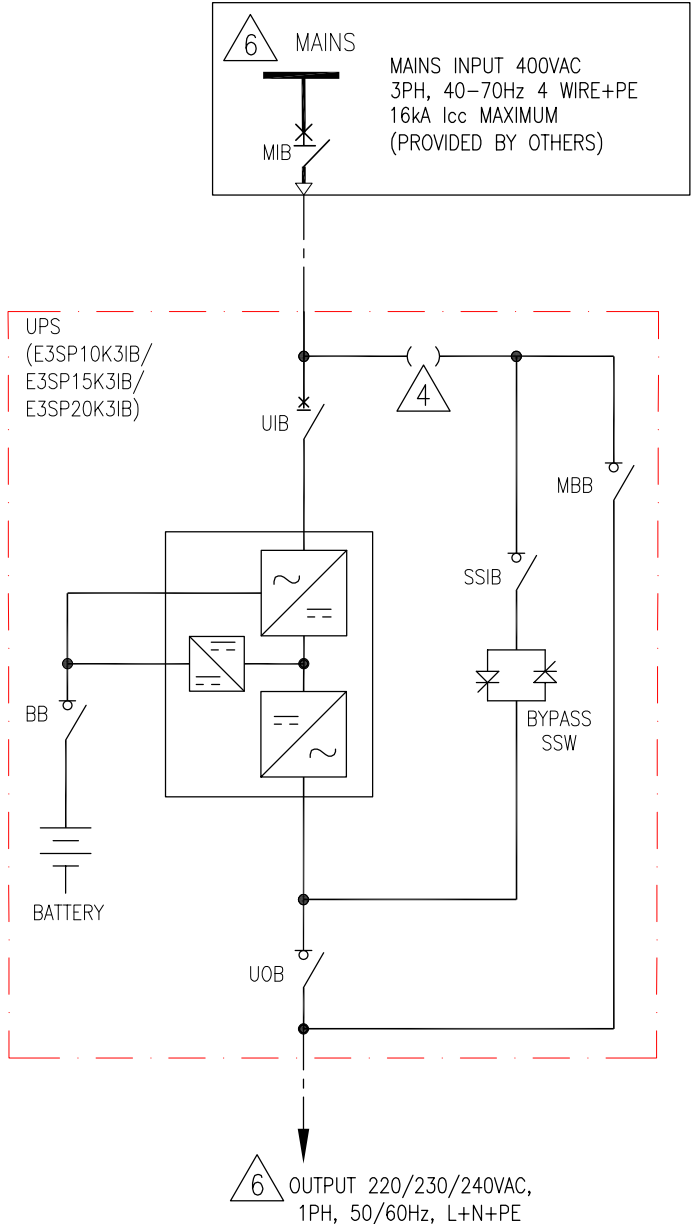
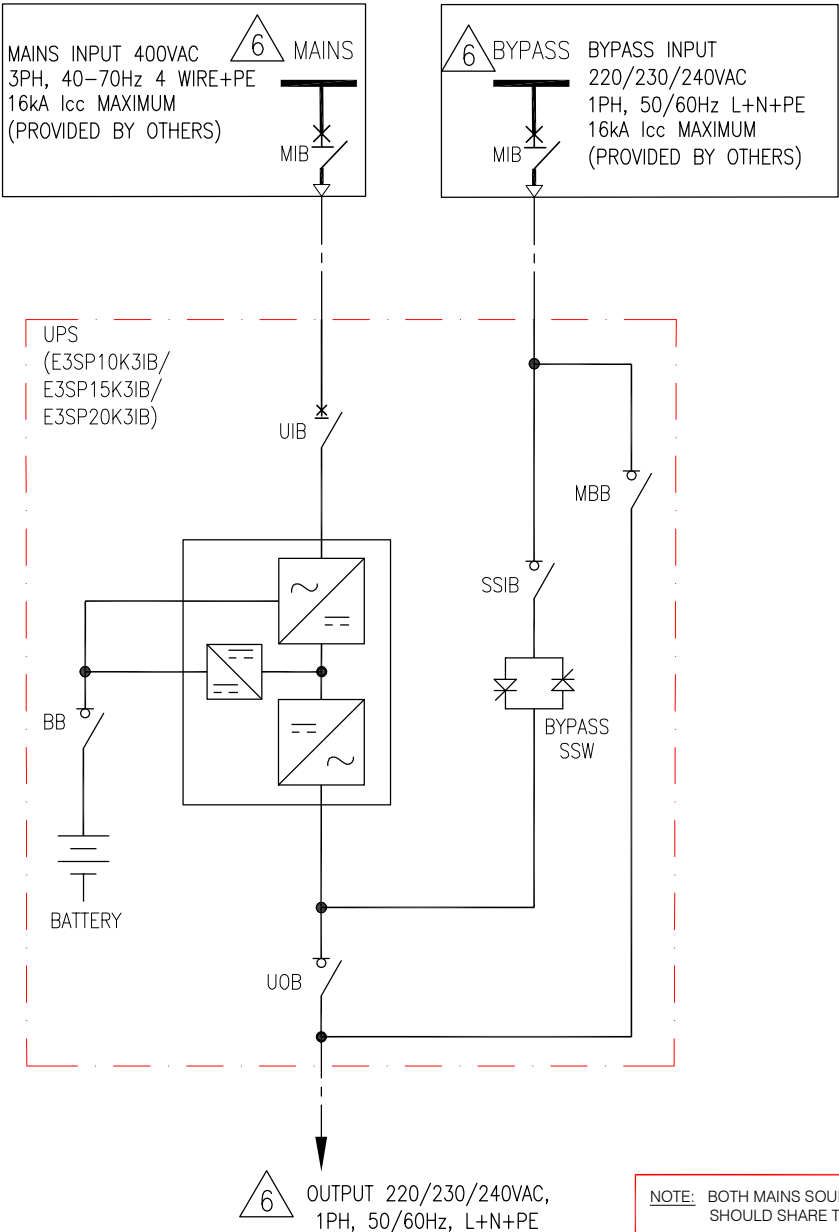


SINGLE MAINS CONFIGURATION



DUAL MAINS CONFIGURATION



NOTE: BOTH MAINS SOURCE AND BYPASS SOURCE SHOULD SHARE THE SAME NEUTRAL AND PE.

LEGEND:
----- AC CABLE PROVIDED BY OTHERS

- NOTES:
1. INSTALLATION SHALL COMPLY WITH ALL APPLICABLE NATIONAL AND LOCAL ELECTRICAL REGULATIONS.
 2. REFER TO PRODUCT DOCUMENTATION FOR ADDITIONAL DETAILS PRIOR TO INSTALLATION AND SITE PREPARATION WORK
 3. DRAWING DEPICTS POWER SYSTEM CONNECTIONS AND IS NOT REPRESENTATIVE OF PHYSICAL LAYOUT.
 4. SINGLE MAINS CONFIGURATION IS DEFAULT.
FOR DUAL MAINS CONFIGURATION REMOVE THE 2 SHORTING JUMPERS.
 5. UP TO 4 UPS CAN BE CONNECTED IN PARALLEL.
 6. REFER TO SHEET-4 FOR ELECTRICAL DATA.
 7. CABLE LUGS ARE PROVIDED BY OTHERS.

THIS DRAWING AND SPECIFICATIONS HEREIN ARE THE PROPERTY OF SCHNEIDER ELECTRIC AND SHALL NOT BE COPIED, REPRODUCED OR USED IN WHOLE OR IN PART, AS THE BASIS FOR THE MANUFACTURE OR SALE OF ITEMS WITHOUT WRITTEN PERMISSION FROM SCHNEIDER ELECTRIC. THIS DRAWING IS BASED UPON LATEST AVAILABLE INFORMATION AND IS SUBJECT TO CHANGE WITHOUT NOTICE.

Schneider Electric

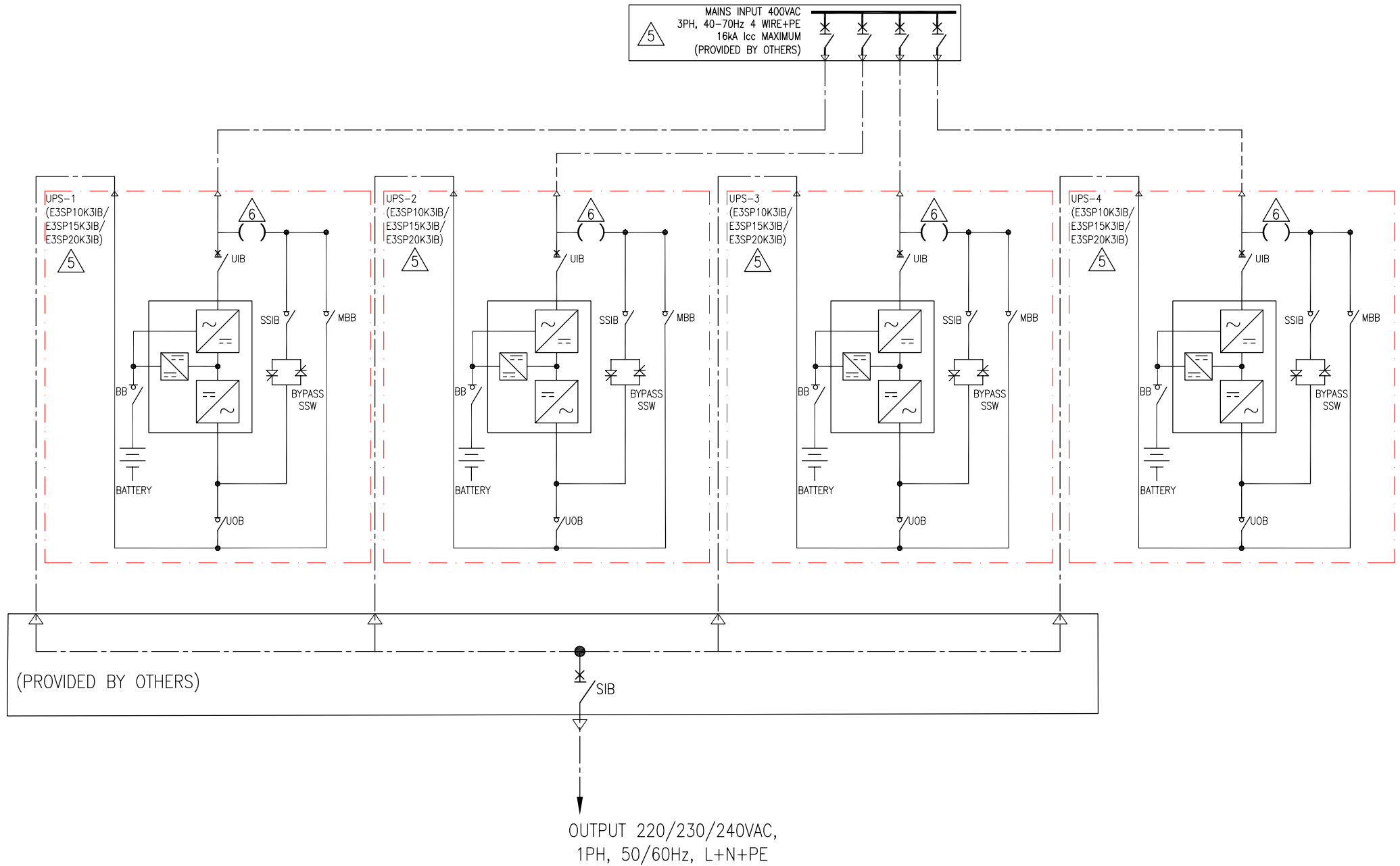
TITLE:
EASY UPS 3S PRO
10 - 20kVA, 400V, 3PH IN 1PH OUT
FOR INTERNAL BATTERIES
SYSTEM ONLINE DIAGRAM-1 UPS

PROJECT: SUBMITTAL DRAWINGS SHEET 1 OF 5

DWG NO: E3SP10K203IB-SD
DRAWN: TRASSIA
ENGINEER: YAPING YANG
APPROVED: DAVE DONG

REV. 0
FIRST ANGLE PROJECTION

4 UPS IN PARALLEL – SINGLE MAINS



NOTES:

1. INSTALLATION SHALL COMPLY WITH ALL APPLICABLE NATIONAL AND LOCAL ELECTRICAL REGULATIONS.
2. REFER TO PRODUCT DOCUMENTATION FOR ADDITIONAL DETAILS PRIOR TO INSTALLATION AND SITE PREPARATION WORK
3. DRAWING DEPICTS POWER SYSTEM CONNECTIONS AND IS NOT REPRESENTATIVE OF PHYSICAL LAYOUT.
4. UP TO 4 UPS CAN BE CONNECTED IN PARALLEL.
5. REFER TO SHEET-4 FOR ELECTRICAL DATA.
6. SINGLE MAINS CONFIGURATION IS DEFAULT. FOR DUAL MAINS CONFIGURATION REMOVE THE 2 SHORTING JUMPERS.
7. UP TO 4 UPS CAN BE CONNECTED IN PARALLEL.
8. CABLE LUGS ARE PROVIDED BY OTHERS.

LEGEND:

----- AC CABLE PROVIDED BY OTHERS

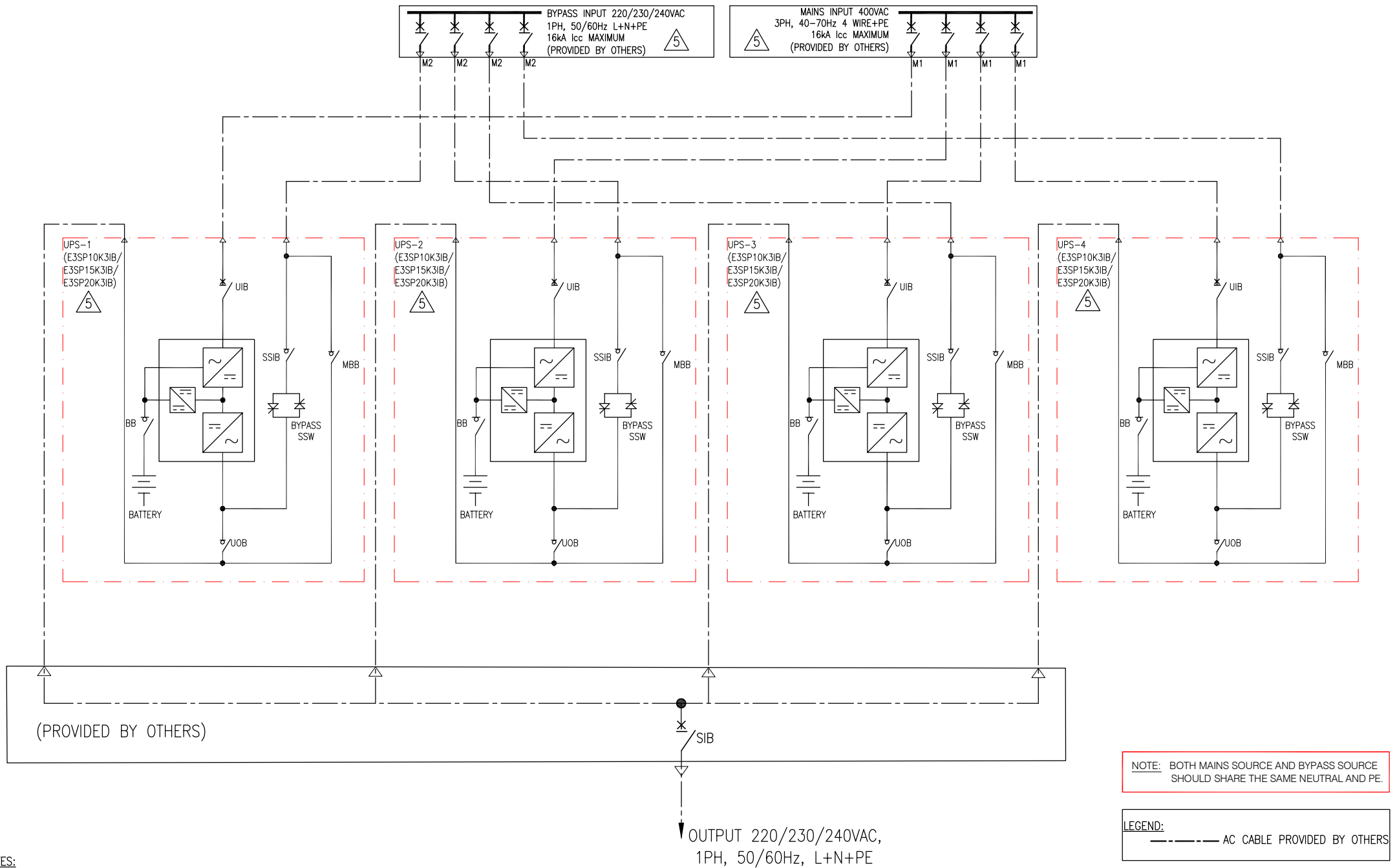
THIS DRAWING AND SPECIFICATIONS HEREIN ARE THE PROPERTY OF SCHNEIDER ELECTRIC AND SHALL NOT BE COPIED, REPRODUCED OR USED IN WHOLE OR IN PART, AS THE BASIS FOR THE MANUFACTURE OR SALE OF ITEMS WITHOUT WRITTEN PERMISSION FROM SCHNEIDER ELECTRIC. THIS DRAWING IS BASED UPON LATEST AVAILABLE INFORMATION AND IS SUBJECT TO CHANGE WITHOUT NOTICE.

Schneider Electric

TITLE:
EASY UPS 3S PRO
10 - 20kVA, 400V, 3PH IN 1PH OUT
FOR INTERNAL BATTERIES
SYSTEM ONLINE DIAGRAM-4 UPS SINGLE MAINS
PROJECT: SUBMITTAL DRAWINGS SHEET 2 OF 5

DWG NO: E3SP10K203IB-SD
DRAWN: TRASSIA
ENGINEER: YAPING YANG
APPROVED: DAVE DONG
30-APR-26
30-APR-26
30-APR-26
REV: 0
FIRST ANGLE PROJECTION

4 UPS IN PARALLEL – DUAL MAINS



NOTES:

1. INSTALLATION SHALL COMPLY WITH ALL APPLICABLE NATIONAL AND LOCAL ELECTRICAL REGULATIONS.
2. REFER TO PRODUCT DOCUMENTATION FOR ADDITIONAL DETAILS PRIOR TO INSTALLATION AND SITE PREPARATION WORK
3. DRAWING DEPICTS POWER SYSTEM CONNECTIONS AND IS NOT REPRESENTATIVE OF PHYSICAL LAYOUT.
4. UP TO 4 UPS CAN BE CONNECTED IN PARALLEL.
5. REFER TO SHEET-4 FOR ELECTRICAL DATA.
6. CABLE LUGS ARE PROVIDED BY OTHERS.

THIS DRAWING AND SPECIFICATIONS HEREIN ARE THE PROPERTY OF SCHNEIDER ELECTRIC AND SHALL NOT BE COPIED, REPRODUCED OR USED IN WHOLE OR IN PART, AS THE BASIS FOR THE MANUFACTURE OR SALE OF ITEMS WITHOUT WRITTEN PERMISSION FROM SCHNEIDER ELECTRIC. THIS DRAWING IS BASED UPON LATEST AVAILABLE INFORMATION AND IS SUBJECT TO CHANGE WITHOUT NOTICE.

Schneider Electric

TITLE:
EASY UPS 3S PRO
10 - 20kVA, 400V, 3PH IN 1PH OUT
FOR INTERNAL BATTERIES
SYSTEM ONLINE DIAGRAM-4 UPS DUAL MAINS

PROJECT: SUBMITTAL DRAWINGS **SHEET 3 OF 5**

DWG NO: E3SP10K203IB-SD **REV:** 0

DRAWN:	TRASSIA	30-APR-26	FIRST ANGLE PROJECTION
ENGINEER:	YAPING YANG	30-APR-26	
APPROVED:	DAVE DONG	30-APR-26	

ELECTRICAL DATA SHEET			
UPS RATING	10kVA	15kVA	20kVA
INPUT SPECIFICATIONS			
INPUT VOLTAGE	400V	400V	400V
NOMINAL INPUT CURRENT (A)	16/16/15	24/23/22	32/31/29
MAXIMUM INPUT CURRENT (A)	21/20/19	31/29/28	41/39/38
INPUT CURRENT LIMITATION (A)	21/20/19	31/29/28	41/39/38
INPUT FREQUENCY	40-70Hz		
INPUT WIRING	3P+N+PE		
INPUT THDI	< 3%@ Full linear load, < 4%@ Full non-linear load		
BYPASS SPECIFICATIONS			
BYPASS VOLTAGE	220V/230V/240V	220V/230V/240V	220V/230V/240V
MINIMUM BYPASS VOLTAGE	198/207/216	198/207/216	198/207/216
MAXMUM BYPASS VOLTAGE	242/253/264	242/253/264	242/253/264
NOMINAL BYPASS CURRENT (A)	47/45/43	70/67/64	94/89/86
BYPASS FREQUENCY	50/60Hz		
BYPASS WIRING	L+N+PE		
OUTPUT SPECIFICATIONS			
OUTPUT VOLTAGE	220V/230V/240V	220V/230V/240V	220V/230V/240V
NOMINAL OUTPUT CURRENT (A)	46/44/42	69/65/63	92/87/84
OUTPUT FREQUENCY	50/60 Hz bypass synchronized; 50/60 Hz ±0.1% free running		
OUTPUT WIRING	L+N+PE		
OUTPUT THDU	<1% for 100% balanced linear load, < 5% for non-linear load		
BATTERY SPECIFICATIONS			
CHARGING POWER	Programmable from 1% to 30% of UPS capacity. Default is 10%.	Programmable from 1% to 26% of UPS capacity. Default is 10%.	Programmable from 1% to 20% of UPS capacity. Default is 10%.
MAXIMUM CHARGING POWER (W)	2000 @ 100% load, 3000 @ 85% Load	3000 @ 100% load, 3900 @ 85% Load	4000 @ 100% load, 4000 @ 0% Load
NUMBER OF BATTERY BLOCKS	40 Blocks with Middle point		
NOMINAL BATTERY VOLTAGE (VDC)	480		
NOMINAL FLOAT VOLTAGE (VDC)	545		
END OF DISCHARGE VOLTAGE (FULL LOAD) (VDC)	384		
END OF DISCHARGE VOLTAGE (NO LOAD) (VDC)	420		
BATTERY CURRENT AT FULL LOAD AND NOMINAL BATTERY VOLTAGE (A)	22	33	44
BATTERY CURRENT AT FULL LOAD AND MINIMUM BATTERY VOLTAGE (A)	27	41	55
RIPPLE CURRENT	<5% C10		
MAXIMUM SHORT CIRCUIT WITHSTAND	Icc=16kA		

NOTES:

1. INSTALLATION SHALL COMPLY WITH ALL APPLICABLE NATIONAL AND LOCAL ELECTRICAL REGULATIONS.
2. REFER TO PRODUCT DOCUMENTATION FOR ADDITIONAL DETAILS PRIOR TO INSTALLATION AND SITE PREPARATION WORK.

THIS DRAWING AND SPECIFICATIONS HEREIN ARE THE PROPERTY OF SCHNEIDER ELECTRIC AND SHALL NOT BE COPIED, REPRODUCED OR USED IN WHOLE OR IN PART, AS THE BASIS FOR THE MANUFACTURE OR SALE OF ITEMS WITHOUT WRITTEN PERMISSION FROM SCHNEIDER ELECTRIC. THIS DRAWING IS BASED UPON LATEST AVAILABLE INFORMATION AND IS SUBJECT TO CHANGE WITHOUT NOTICE.



TITLE:
EASY UPS 3S PRO
10 - 20kVA, 400V, 3PH IN 1PH OUT
FOR INTERNAL BATTERIES
ELECTRICAL DATA SHEET

PROJECT: SUBMITTAL DRAWINGS | SHEET 4 OF 5

DWG NO: E3SP10K2031B-SD

DRAWN:	TRASSIA	30-APR-26
ENGINEER:	YAPING YANG	30-APR-26
APPROVED:	DAVE DONG	30-APR-26

REV. 0

FIRST ANGLE PROJECTION

Copper for 3:1 UPS – Single Mains									
UPS Rating	10kVA			15kVA			20kVA		
Volatge (V)	380	400	415	380	400	415	380	400	415
Input phases (mm ²)	16	16	16	25	25	25	35	35	35
Input neutral (mm ²)	16	16	16	25	25	25	35	35	35
Input PE (mm ²)	16	16	16	16	16	16	16	16	16
Bypass/output phases (mm ²)	16	16	16	25	25	25	35	35	35
Bypass/output neutral (mm ²)	16	16	16	25	25	25	35	35	35
Bypass PE/output PE (mm ²)	16	16	16	16	16	16	16	16	16
DC+/DC-/DC N (mm ²)	6	6	6	6	6	6	16	16	16
DC PE (mm ²)	6	6	6	6	6	6	16	16	16

Copper for 3:1 UPS – Dual Mains									
UPS Rating	10kVA			15kVA			20kVA		
Volatge (V)	380	400	415	380	400	415	380	400	415
Input phases (mm ²)	6	6	6	6	6	6	10	10	10
Input neutral (mm ²)	6	6	6	6	6	6	10	10	10
Input PE (mm ²)	6	6	6	6	6	6	10	10	10
Bypass/output phases (mm ²)	16	16	16	25	25	25	35	35	35
Bypass/output neutral (mm ²)	16	16	16	25	25	25	35	35	35
Bypass PE/output PE (mm ²)	16	16	16	16	16	16	16	16	16
DC+/DC-/DC N (mm ²)	6	6	6	6	6	6	16	16	16
DC PE (mm ²)	6	6	6	6	6	6	16	16	16

NOTES:

1. INSTALLATION SHALL COMPLY WITH ALL APPLICABLE NATIONAL AND LOCAL ELECTRICAL REGULATIONS.
2. REFER TO PRODUCT DOCUMENTATION FOR ADDITIONAL DETAILS PRIOR TO INSTALLATION AND SITE PREPARATION WORK.

THIS DRAWING AND SPECIFICATIONS HEREIN ARE THE PROPERTY OF SCHNEIDER ELECTRIC AND SHALL NOT BE COPIED, REPRODUCED OR USED IN WHOLE OR IN PART, AS THE BASIS FOR THE MANUFACTURE OR SALE OF ITEMS WITHOUT WRITTEN PERMISSION FROM SCHNEIDER ELECTRIC. THIS DRAWING IS BASED UPON LATEST AVAILABLE INFORMATION AND IS SUBJECT TO CHANGE WITHOUT NOTICE.



TITLE:
EASY UPS 3S PRO
10 - 20kVA, 400V, 3PH IN 1PH OUT
FOR INTERNAL BATTERIES
ELECTRICAL DATA SHEET

PROJECT: SUBMITTAL DRAWINGS | SHEET 5 OF 5

DWG NO: E3SP10K2031B-SD

DRAWN: TRASSIA 30-APR-26

ENGINEER: YAPING YANG 30-APR-26

APPROVED: DAVE DONG 30-APR-26

REV. 0

FIRST
ANGLE
PROJECTION